

2024

SHAW'S

PLUMBING & GAS

70 YEARS SERVICING THE SUBURBS OF BRISBANE

CAPABILITY STATEMENT & PORTFOLIO

TABLE OF CONTENTS



1	TABLE OF CONTENTS	01
2	INTRODUCTION	02
	Shaw's Team	02
	Director	03
	Cost Estimators	04
	Trade Managers	05
3	HEALTH & SAFETY	06
4	CORE COMPETENCIES	07-08
5	COLLABORATIONS	09
6	PROJECT PORTFOLIO	10
	Silkstone & Ipswich Medical Centres	10
	Yeerongpilly Green Townhouses (x24)	11
	Research Street & Loam Street Warehouses	12
	Boarding House Refurbishments, BBC	13
7	CONTACT	14

Shaw's Plumbing and Gas

SHAW'S TEAM



Shaw's Plumbing & Gas was established in the late 1950's and is now 3 generations old. In the early years, the company began as a humble 3-man operation - a home-operated, family business in the western suburbs of Brisbane. In 2012, Brad undertook operation, management, and directorship of Shaw's Plumbing and Gas, which has seen fantastic growth with a team of 34 full-time staff. Shaw's Plumbing and Gas specialise in high-end architectural homes and commercial developments across Brisbane and surrounds. but our bread and butter remains to be

all things maintenance, with 10 dedicated maintenance trucks on the road every day, as well as additional specialised drain-cleaning vehicles. Our maintenance team is supported by 4 full-time customer service representatives who prioritise high-quality customer service to our clients through accurate and reliable booking times, informative unbiased advice, and management of day-to-day operations.

Shaw's Plumbing and Gas

DIRECTOR



BRAD SHAW

Shaw's Plumbing and Gas is a family business at its core, with Brad Shaw representing 3 generations of plumbers, servicing the suburbs of Brisbane for 70 years. After a hard-earned process of growth and expansion, Brad has created the wonderfully combined and respectable teams we have today, including maintenance, construction, commercial, and admin.

Brad's current role as director sees him dedicated to business development and overseeing the growth and management of the company. Brad maintains involvement with operations when expert opinion and innovative solutions are required, guiding and educating our team in every opportunity necessary.

Shaw's Plumbing and Gas

MAINTENANCE COST ESTIMATOR



LUKE MAHONEY

Since combining his self-managed plumbing service, Mahoney Plumbing, with Shaw's roughly four years ago, Luke has become our dedicated maintenance cost and estimator. With several decades experience on the tools, plus his impressive customer & supplier relationship management skills, Luke is our go-to for all things maintenance, from home repairs to commercial buildings and everything in between.

CONSTRUCTION COST ESTIMATOR



CORY RATZ

Cory has been with Shaw's for over five years and has established his skills as our dedicated construction cost and estimator and construction manager. Cory takes on the responsibilities of quoting construction projects from the ground up, and coordinating with builders & our construction team members to bring developments to life.

Shaw's Plumbing and Gas

CONSTRUCTION MANAGER



JOHN MCADAM

John is a long-standing member of Shaw's, and is equipped with over 20 years of plumbing experience. He knows construction plumbing in & out, and is relied upon to lead day-to-day construction project development and coordinate our construction team towards maximum efficiency, organization, and problem-solving abilities. John demonstrates high technical excellence, relationship management, and handling of daily operations across his sites, all the while leading his team to deliver successful outcomes.

COMMERCIAL SERVICE MANAGER



BLAKE PETROFF

Blake is a highly experienced tradesman, who has been with Shaw's for over a year, and is earning his title as commercial service manager. Blake takes the initiative to grow our commercial service profile, and is our go-to for maintaining strong client relationships by providing ongoing maintenance and communication. Blake is dedicated to balancing the needs of our commercial clients, all the while remaining on the front-line of maintenance plumbing.

HEALTH & SAFETY PRACTICES

Ensuring the safety and well-being of our clients, employees, and the environment is paramount to our plumbing service. At Shaw's Plumbing and Gas, we adhere to rigorous health and safety protocols to mitigate risks and promote a secure working environment. Our team is trained extensively in industry-standard safety practices, including proper handling of equipment, use of personal protective gear, and adherence to relevant regulations and codes. We regularly assess and update our safety procedures to align with evolving industry standards and best practices. By prioritizing health and safety, we not only protect the integrity of our work but also uphold our commitment to professionalism and excellence in every project we undertake.

Key Safety Procedures Include:

1. Licensing and Certification
2. Personal Protective Equipment (PPE)
3. Hazard Communication
4. Working at Heights
5. Confined Space Entry
6. Electrical Safety
7. Gas Safety Regulations
8. Gas Appliance Safety
9. Asbestos Awareness
10. Ergonomics/Proper lifting techniques
11. Pressure Testing
12. Emergency Shut-off Procedures
13. Vehicle Safety
14. Flammable Materials Handling
15. First Aid and Emergency Response
16. COVID-19 Safety
17. Documentation and Record-keeping

By adhering to these health and safety requirements, Shaw's Plumbing and Gas can ensure the safe and effective installation, maintenance, and repair of plumbing and gas systems, protecting both themselves and the community from potential hazards and accidents.

CORE COMPETENCIES

Shaw's Plumbing and Gas prides itself on offering a diverse range of core competencies to meet the plumbing and gas needs of commercial and residential clients alike. With a focus on quality, reliability, and efficiency, our team excels in various specialized areas, ensuring unparalleled service delivery.

Commercial Plumbing Services

Shaw's Plumbing and Gas demonstrates expertise in providing comprehensive plumbing solutions for both new projects and fit-outs, thanks to our CM3 certification. From initial design to installation and ongoing maintenance, we deliver tailored solutions to meet the unique needs of commercial establishments.

Fire Service Installation

Shaw's Plumbing and Gas stands as a trusted partner for ensuring fire safety compliance. Our services encompass the installation of fire mains, hydrants, booster systems, and fire hose reels, guaranteeing optimal functionality and reliability in critical situations.

Emergency & Maintenance Plumbing

We understand the urgency of plumbing emergencies, which is why we offer 24/7 emergency plumbing services. With rapid deployment of skilled technicians, we ensure quick and efficient response to urgent plumbing issues, minimizing downtime and inconvenience for our clients.

Water Heater Installation & Repair

Shaw's Plumbing and Gas is also renowned for its specialization in water heater installation and repair. Whether it's gas, electric, heat pump, or solar systems, we provide energy-efficient and cost-effective solutions tailored to our clients' hot water needs.

Civil Plumbing

We handle water, fire, and sewer connections to QUU services with precision and expertise. Additionally, we excel in the installation of sanitary and stormwater chambers/pits, as well as manholes and chambers, ensuring efficient and compliant infrastructure for our clients.

Pipe Inspection & Repair

Our capabilities extend to pipe inspection and repair, utilizing CCTV and locator equipment and boasting a 5000 psi jetting capability. We efficiently diagnose and address issues, ensuring the integrity and functionality of plumbing systems.

Fixture & Appliance Installation

We excel in fixture and appliance installation, ensuring seamless integration and compliance with industry standards. With a commitment to excellence and customer satisfaction, we are dedicated to delivering superior plumbing and gas services.

Gas Fitting Services

Shaw's Plumbing and Gas provides comprehensive gas fitting services, including the installation, repair, and maintenance of gas lines, appliances, and systems. With a focus on safety and compliance, our certified gas fitters ensure the reliable operation of gas equipment in residential & commercial settings.

Backflow Prevention

We specialize in backflow prevention services, including the installation and testing of backflow prevention devices to safeguard potable water supplies from contamination. Our licensed technicians ensure compliance with regulatory requirements and maintain the integrity of water systems.

Water Filtration and Treatment

Shaw's Plumbing and Gas offers water filtration and treatment solutions to improve water quality and address specific water concerns. From filtration systems to water softeners, we provide tailored solutions to meet the unique needs of our clients.

Project Management

Our team excels in project management, overseeing plumbing and gas projects from conception to completion. With meticulous planning, efficient coordination, and attention to detail, we ensure timely delivery, cost-effectiveness, and quality craftsmanship in every project we undertake.

Drainage Solutions

Shaw's Plumbing and Gas offers expertise in drainage solutions to address water management needs effectively. Whether it's stormwater drainage, sewer line installation, or drainage system repairs, our team implements efficient solutions to mitigate flooding risks, ensure proper wastewater disposal, and clear blocked drains.

CORE COMPETENCIES

Qualifications

- **Gas Fittings:** Proficient in handling a spectrum of gas-related tasks, our certified gas fitters bring unparalleled expertise to ensure safety and precision in every project.
- **Backflow Prevention:** Our professionals are equipped with advanced knowledge and skills in backflow prevention, safeguarding the integrity of water systems and ensuring compliance with industry standards.
- **Thermostatic Mixing Valves:** With a deep understanding of thermostatic mixing valves, our team excels in maintaining precise control over water temperatures, promoting safety and comfort in various settings.
- **Confined Spaces:** Our experts are trained and certified to navigate and work efficiently in confined spaces, prioritising safety without compromising on productivity.
- **Working at Heights:** Safety is paramount, and our team is adept at working at heights, utilizing best practices and equipment to carry out tasks with the utmost care and precision.
- **Elevated Work Platforms:** Our professionals are skilled in the use of elevated work platforms, ensuring efficient and secure access to elevated areas for a wide range of tasks.
- **CM3 Certification:** We hold CM3 certification, a testament to our commitment to high safety standards and compliance with industry regulations. This certification underscores our dedication to delivering services of the highest quality and safety.

Awards

In 2022, we proudly secured both the MPAQ Outstanding Copper Plumbing and Gas Project of the Year Award and Gas Project of the Year Award for our exceptional work in hot water replacement services at the RNA Showgrounds, along with a range of other achievements. In this project, we not only achieved superior performance but also introduced an efficient and cost-effective solution.

In a recent triumph, we were recognised as award finalists for the following 2023 MPAQ awards: Service Excellence Award, Commercial Plumbing or Gas Project of the Year, Outstanding Copper Plumbing and Gas Project of the Year, and Domestic Plumbing or Gas Project of the Year.

Collaborations

Our primary collaborations extend to commercial property management entities including JLL, Ray White Commercial, Cornerstone Property, and First Asset Management, to whom we maintain close relationships with and prioritize communication and responsiveness.

We are also proud members of Master Plumbers' Association Queensland (MPAQ) as well as Queensland Building and Construction Commission.

We strive to involve ourselves with a variety of community involvement, including sponsorships at local schools and sports clubs, such as Christ The King School Graceville, Western Districts Netball Association, Corinda Bowls Club and McLeod Country Golf Club, just to name a few.

COLLABORATIONS

At Shaw's Plumbing and Gas, we believe that successful construction projects are built on strong partnerships and collaborative efforts. With years of experience and a dedication to excellence, we have forged lasting relationships with builders, construction firms, and architects alike. Through seamless collaboration, we bring together our expertise in plumbing and gas systems to contribute to the creation of remarkable projects. Find examples of our recent collaborations below.



Hutchison Builders



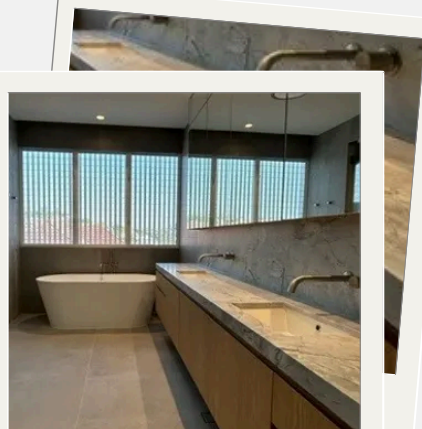
Graya



CGH Constructions



Brisbane Boys' College



James Anthony
Construction



RNA Showgrounds



MWA Design &
Construction



Cloustruct

PROJECT PORTFOLIO

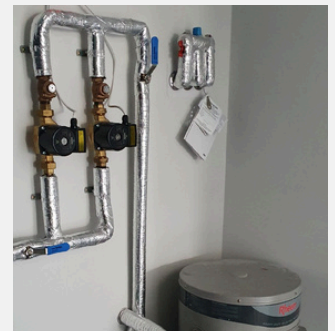
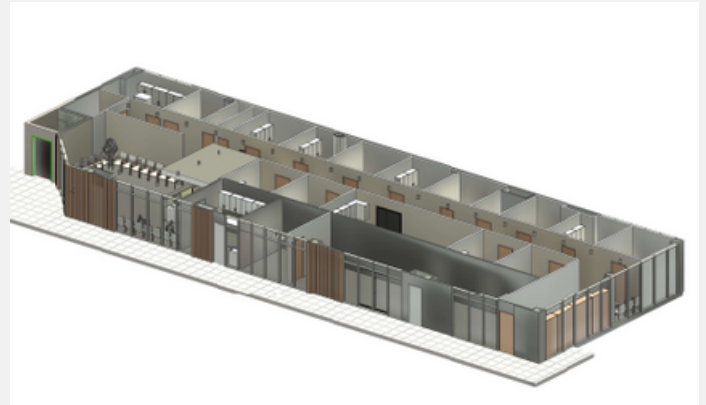
SILKSTONE MEDICAL CENTRE

Client: Doctors & Co

Date: 2022

Inclusions:

- Supply & installation of hot water system & reticulating pump
- Supply & installation of 2x RPZ valves + Form 9 testing certificate
- Installation of isolation valves located below each basin tap
- Installation and commissioning of all fixtures and appliances
- Elevated sanitary drainage installed in 100mm PVC
- Water rough in installed in copper & Rehau
- 25mm Cold mains installed within building, 25mm hot circulated line included
- Installation of venting in main roof
- Core holes, Fire collars & certification
- Tundish points for aircon and HWS



IPSWICH MEDICAL CENTRE

Client: Decocorp Construction

Date: 2023

Inclusions:

- Isolate, disconnect and remove all redundant services prior to demolition
- Rough-in drainage, hot and cold water supply and connect to existing services
- Install and connect all sinks and taps, tested & commissioned



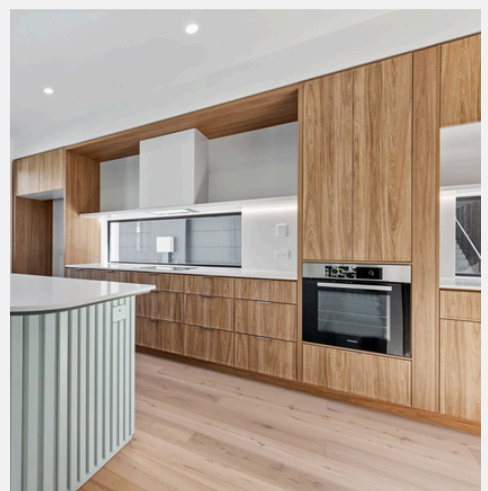
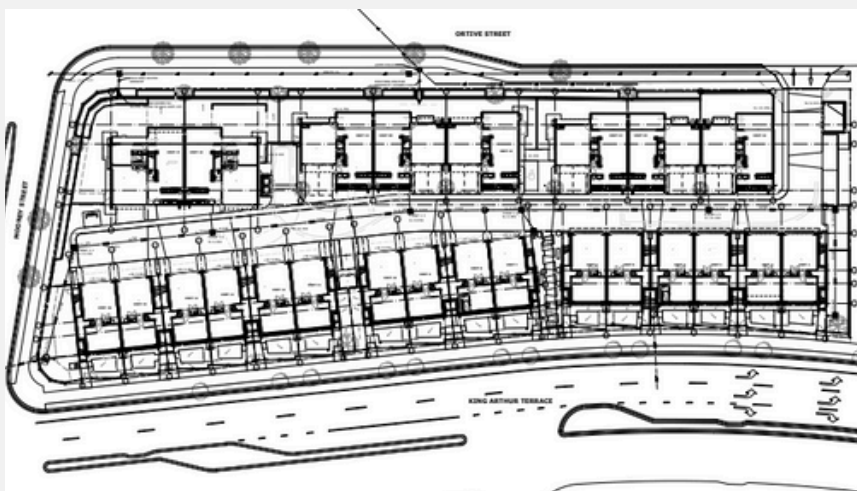
YEERONGPILLY GREEN TOWNHOUSES (X24)

Client: Hutchinson Builders

Date: 2023

Inclusions:

- Excavation for all in-ground Plumbing.
- Supply & installation of 24 storm water pits
- Installation of storm water mains
- Installation of sanitary mains from existing 150mm property connection
- Supply, Install & Register 24 BCC approved water sub-meters in meter boxes
- Installation of 100mm combined fire & domestic service meter assembly
- Installation of 8-100mm water service in GF & Friatec electrofusion piping systems
- Installation of 2 Dual check valves for future irrigation / landscape works.
- Installation of 3 spring hydrants installed off combined fire & domestic service
- Rough-in installed in Auspex Piping System, sized in accordance with AS3500.2:2018 & AS3500.4:2018.
- Supply & Fit off 24 250L Electric HWS on safe trays
- 20mm valves installed on hot water units
- Downpipes installed in 100mm PVC on bolted tee brackets
- Installation of isolation valves below each mixer tap.
- Installation and commissioning of all fixtures and appliances.
- Works completed, tested & inspected under relevant council forms.



RESEARCH STREET WAREHOUSES

Client: Cloustruct

Date: 2023

Inclusions:

- Installation of main site water meter assembly & 32mm sub meters.
- Installation of hydrant booster & 2 dual pillar hydrants.
- Installation of fire cabinet for dual booster.
- Temporary works including taps, sinks, and water fountains.
- Installation of downpipe groundworks
- Installation of 32mm sub meter supply
- Supply, installation & commissioning of double check valves and RPZD valve.
- Installation of fire hose reels
- installation of isolation & pressure limiting valve
- Installation and commissioning of all zip taps / dishwashers.
- Form 43 Submitted on completion of works for storm water



LOAM STREET WAREHOUSES

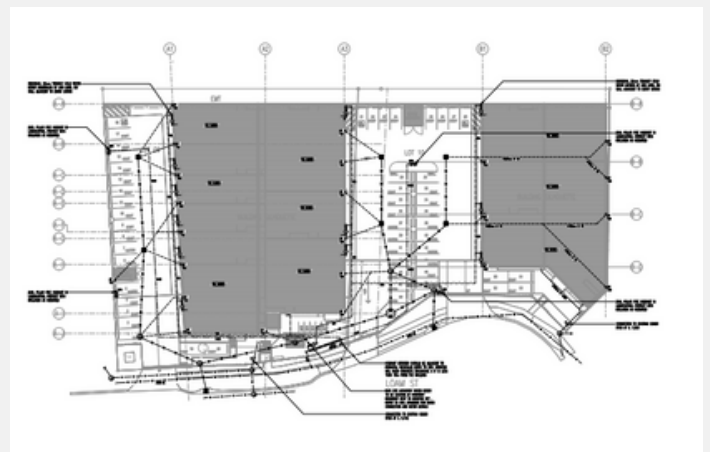
Client: Cloustruct

Date: 2023

Inclusions:

- Installation of main site water meter assembly & 20mm sub meters.
- Installation of hot water systems
- Rough in installion in Auspex pipework
- Temporary works including taps, washup sinks, and water fountains.
- Installation of downpipe ground points
- installation of isolation & pressure limiting valve
- Connection to sewer main via QUU junction

- Installation and commissioning of all zip taps / dishwashers.
- Installation of 2 spring hydrants
- Connection of stormwater mains to civil stormwater pits
- Installation of sanitary drainage
- Connection of existing + new hot and cold water services
- Installation of kitchen sinks & mixers
- Installation of showers
- Drain camera reporting
- Works completed under a form 1 & 7
- Form 43 Submitted on completion of works for storm water





BOARDING HOUSE REFURBISHMENTS, BRISBANE BOYS COLLEGE

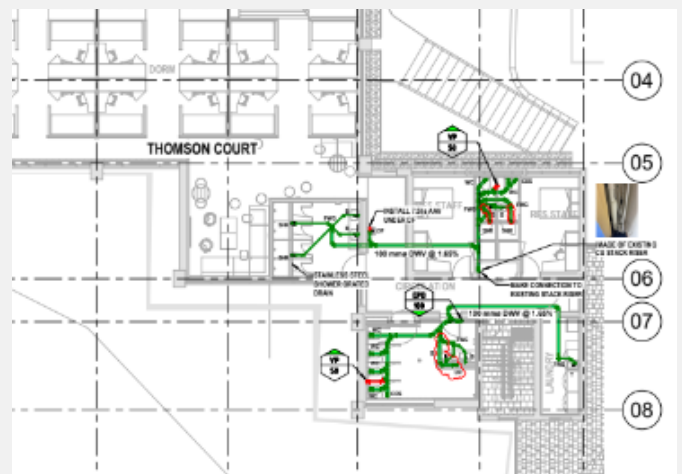
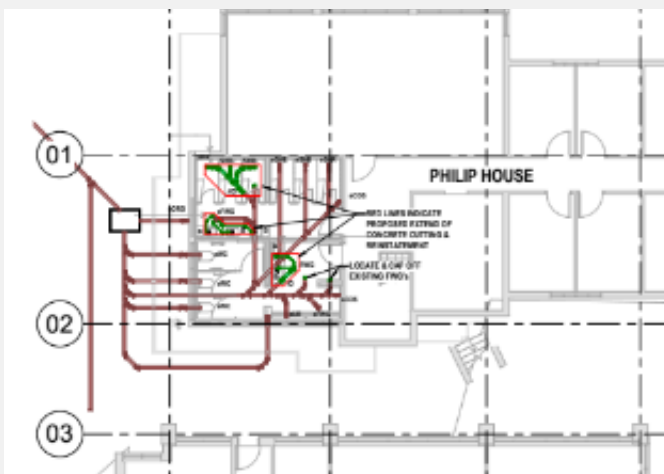
Client: PPQ Group

Date: 2023/2024

Inclusions:

- Isolate water to existing fixtures & leave site tap provisions where required.
- Supply & Install 4 x TMV with isolation bypass & S/Steel, lockable box.
- All hot & cold water mains replaced in Copper & Rehau pipework where permitted
- Elevated pipework installed in Raupiano with sound dampening brackets
- Installation of urinal sensor & flush system
- Fit off, test and commission all fixtures & appliances.
- Test and commission of all TMV's .
- bathroom water mains (Hot & Cold) to be replaced, including existing TMV's
- Installation of fire collars

Shaw's and Brisbane Boys' College hold a long-standing loyalty, with continual plumbing maintenance & renovations of all kind for more than 30 years. We have collaborated on a range of projects, including boarding houses, bathrooms, canteen, sports complexes, hall, laundry, gas fitting and more





CONTACT

Business Name: B.E Shaw Plumbing

Trading as: Shaw's Plumbing and Gas

Address: 35/121 Kerry Road, Archerfield QLD 4108

ABN: 41 270 229 002

QBCC: 15055163

Office Phone: 07 3034 1870

Office Email: info@shawspg.com.au

Website: www.shawsplumbingandgas.com.au

Facebook/Instagram: [shawsplumbing_and_gas](#)

A modern bathroom interior featuring a light-colored stone wall and a large white freestanding bathtub. The scene is softly lit, with a warm glow from a light source on the left. The text is overlaid on the center of the image.

SHAW'S

PLUMBING & GAS

70 YEARS SERVICING THE SUBURBS OF BRISBANE

07 3034 1870 | info@shawspg.com.au | www.shawsplumbingandgas.com.au